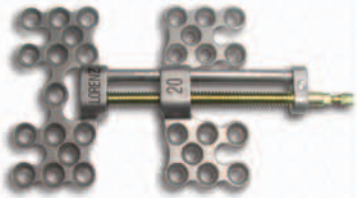


LORENZ® Quick Connect TITANIUM DISTRACTION

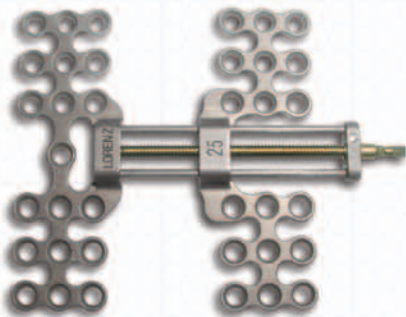
The Lorenz® Quick Connect Distraction System allows for simple removal of the shaft extension during the consolidation period. There is both a wide variety of devices and extensions, which allows the surgeon to customize the distractor to each patient. Overall, this technology can promote patient comfort making it ideal for most mandibular distraction cases.



QC Pediatric Distractor

1.5MM PEDIATRIC DISTRACTORS

Item #	Description
01-3102QC	10mm QC Pediatric Distractor
01-3103QC	15mm QC Pediatric Distractor
01-3104QC	20mm QC Pediatric Distractor
01-3101QC	30mm QC Pediatric Distractor



QC Dual Rail Distractor

2.0MM DUAL RAIL DISTRACTORS

Item #	Description
01-3112QC	10mm QC Dual Rail Distractor
01-3116QC	15mm QC Dual Rail Distractor
01-3126QC	25mm QC Dual Rail Distractor



2" QC Solid Shaft Extension
01-3462QC



2" Solid Shaft Extension Removal Tool
01-3465QC



2" QC Flexible Shaft Extension
01-3482QC



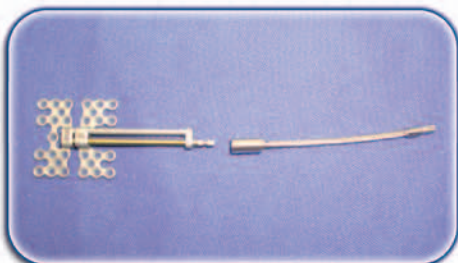
2" QC Flex Shaft Extension Removal Tool
01-3491QC



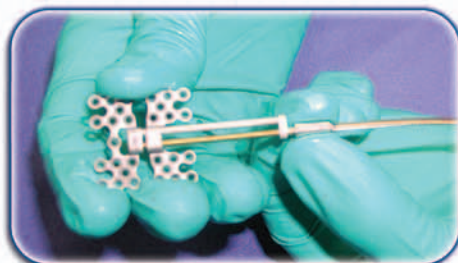
QC Patient Driver
01-3205QC

LORENZ® Quick Connect TITANIUM DISTRACTION

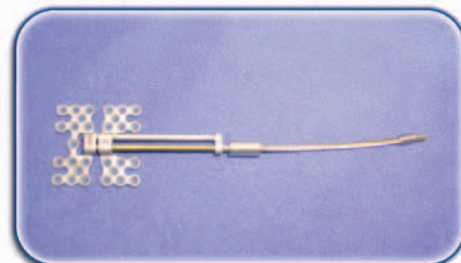
APPLICATION OF SHAFT EXTENSION



1. Choose the type of connection that is desired, either a flexible shaft extension or a solid shaft extension.



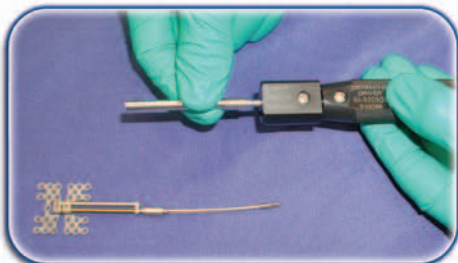
2. Hold the shaft extension by placing the extension's quick connection sleeve between your thumb and index finger.



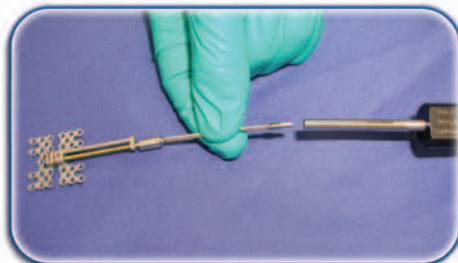
3. Line up the squares on the extension and the device's drive screw. Then push the extension toward the distractor until a click is heard or felt.

*Another option for placing the shaft extension includes threading the removal tool onto the extension until the removal tool will not thread on any farther. Then line up the squares of the drive screw and the extension. Then push the extension until it is fully seated on the drive screw. Hold the patient driver and remove the tool by unthreading it from the extension. Gently pull on the extension to ensure that it is affixed to the device.

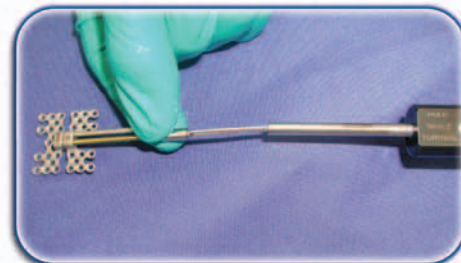
REMOVAL OF SHAFT EXTENSION



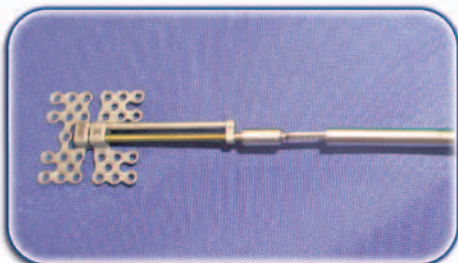
1. Place the removal tool on the end of the patient driver.



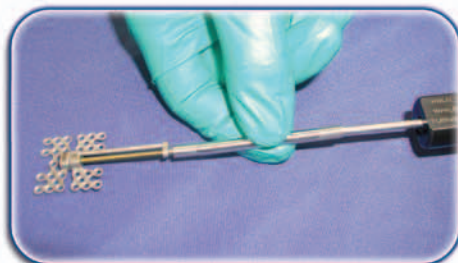
2. Pass the extension through the removal tool being sure to engage the square drive mechanism of the extension with the patient driver.



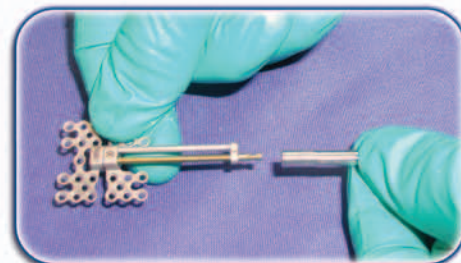
3. Push the removal tool as far forward as it will go keeping the extension engaged in the patient driver.



4. Thread the removal tool forward.



5. Once the threads on the extension are showing through the other end of the removal tool, or the removal tool can no longer be threaded forward, stop.



6. Pull the extension (with the removal tool) off of the device and discard.

As the manufacturer of this device, Walter Lorenz Surgical does not practice medicine and does not recommend this or any other surgical technique or product for use on a specific patient. Walter Lorenz Surgical is not responsible for the selection of appropriate surgical technique or product to be utilized for an individual patient. *This flyer is intended for surgeon information only and is not intended for patient distribution. For additional information, see package insert for a complete listing of precautions and warnings.

For more information on The Lorenz® Quick Connect Distraction System, please contact us at:

GLOBAL HEADQUARTERS: 1520 Tradeport Drive • Jacksonville, Florida 32218-2480 • 904-741-4400 • TOLL FREE 800-874-7711
FAX 904-741-4500 • INTL FAX 904-741-3059 • www.lorenzsurgical.com

EUROPEAN HEADQUARTERS: Toermalijnring 600 • 3316 LC Dordrecht, Netherlands • (31) 78 629 29 10 • FAX (31) 78 629 29 12
email: europe@wlorenz.com